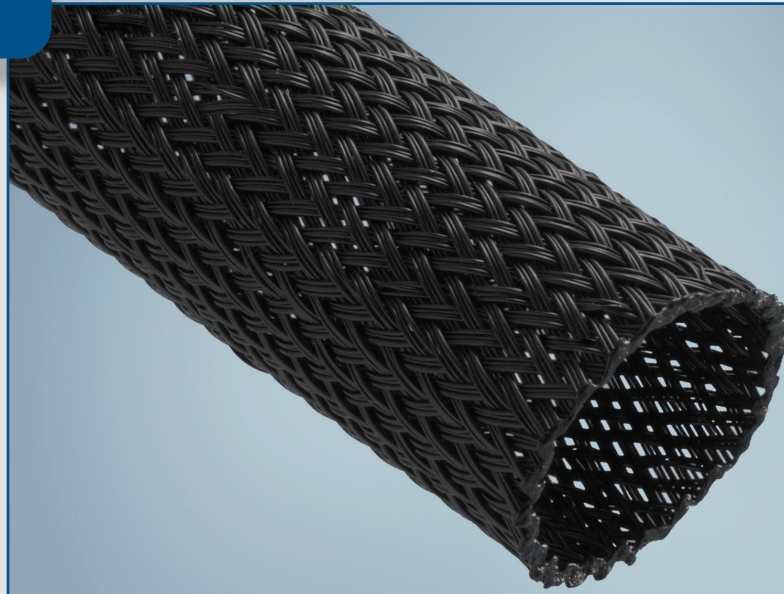


Product Highlights

- Operating temperature up to +150°C (+302°F)
- Excellent abrasion resistance
- Highly flexible and easy to install
- Expandable design for custom fit
- Lightweight and breathable textile design
- Available with fray resistant end-treatment for cut lengths

Typical Applications

- Hose & Tubing Applications
- Cable Assemblies
- Wire Harnesses



Expando® DM TW is a lightweight and flexible braided sleeve designed to provide mechanical protection for most common automotive applications. Constructed of PA (polyamide) monofilament guard strands and PET (polyethylene terephthalate) support strands, this dual-monofilament blend provides an excellent balance of abrasion protection, temperature resistance, and installability.

For severe applications, Expando DM TW utilizes a tight construction to provide superior mechanical protection, effectively extending the service life of hose and tubing applications as well as wire harnesses and other critical components.

With the ability to expand many times larger than its diameter, Expando DM TW is easy to install, can adapt to a wide range of application sizes and profiles, as well as accommodate large pre-installed connectors. The breathable textile construction allows fluids drainage and heat dissipation as well as prevents condensation.



Our manufacturing sites are certified ISO 9001, IATF 16949, or AS/EN 9100, ISO 14001 and ISO 45001 (Selected Sites)